

Techne's Dri-block[®] heaters provide a safe, dry, constant temperature source in the laboratory. The units are particularly suitable for microbiology and clinical laboratories for incubation, boiling, inactivation, wet ashing, sample concentration, enzyme analysis and many other clinical and industrial purposes.

- Very accurate temperature control
- Analog or digital control
- Choice of 2 or 3 block format
- Wide range of interchangeable aluminum blocks
- Blocks available as accessories for all applications - tubes, vials and microplates
- Block extraction tool is supplied, allowing blocks to be removed easily
- 3-year warranty as standard



DB-2A



DB-2D

DB-2A

- Small, light and compact footprint, economical price
- Can hold up to 2 aluminum insert blocks or one 96-well plate block
- Analog: temperature setting is by a calibrated dial
- Temperature range from ambient to 100°C
- Fast heat-up rate: 30°C to 100°C in just 12 minutes
- Temperature stability at 40°C: $\pm 0.05^\circ\text{C}$

DB-2D

- Bright orange LED digital display for fast and accurate setting of temperature
- RS232 connection available for PC control
- Can hold up to 2 aluminum insert blocks or one 96-well plate block
- Temperature range from ambient to 100°C
- Fast heat-up rate: 30°C to 100°C in just 12 minutes
- Temperature stability at 40°C: $\pm 0.05^\circ\text{C}$

Technical Specification

	DB-2A	DB-2D
Temperature range	Ambient to 100°C	Ambient to 100°C
Temperature stability	$\pm 0.05^\circ\text{C}$	$\pm 0.05^\circ\text{C}$
	@ 40°C	$\pm 0.1^\circ\text{C}$
	@ 100°C	$\pm 0.1^\circ\text{C}$
Temperature setting	Rotary knob	Push button
Temperature display		Red LED 3 digits
Temperature scale graduation	2°C	No graduation
Maximum temperature variation between identical blocks @ 40°C	0.2°C	0.2°C
Set point accuracy	$\pm 2^\circ\text{C}$	$\pm 1^\circ\text{C}$
Maximum number of blocks	2	2
Heat up time, minutes		
	30-37°C	8
	30-56°C	9
	30-Max.	12
RS232 option available	No	Yes
Power supply	117V	117V
Overall size L x W x H (mm)	202 x 260 x 105	202 x 260 x 105

Ordering Information

Product Code	Description
1081500	DB-2A ambient to 100°C, requires 2 insert blocks
1082000	DB-2D ambient to 100°C, requires 2 insert blocks
FDB02DPR	DB-2D + RS232 ambient to 100°C, requires 2 insert blocks

DB-3

- The DB-3 is designed to hold up to 3 aluminum insert blocks or one 96-well plate block
- Analog: temperature setting is by a calibrated dial
- Temperature range from ambient to 100°C
- Fast heat-up rate: 30°C to 100°C in just 18 minutes
- Temperature stability at 40°C: $\pm 0.05^\circ\text{C}$



DB-3

DB-3A

- Temperature range from ambient to 200°C for higher temperature applications
- Can hold up to 3 aluminum insert blocks or one 96-well plate block
- Analog: temperature setting is by a calibrated dial
- Powerful heater for fast heat-up rate: 30°C to 100°C in just 12 minutes
- Temperature stability at 40°C: $\pm 0.1^\circ\text{C}$



DB-3A

DB-3D

- Can hold up to 3 aluminum insert blocks or one 96-well plate block
- Bright orange LED digital display for fast and accurate setting of temperature
- Temperature range from 25°C to 200°C
- Powerful heater for fast heat-up rate: 30°C to 200°C in just 25 minutes
- Interchangeable insert blocks to accommodate a variety of tubes
- Temperature stability at 40°C: $\pm 0.1^\circ\text{C}$



DB-3D

Technical Specification

	DB-3	DB-3A	DB-3D
Temperature range	Ambient - 100°C	Ambient - 200°C	ambient - 200°C
Temperature stability	@ 40°C @ 100°C	$\pm 0.05^\circ\text{C}$ $\pm 0.1^\circ\text{C}$	$\pm 0.1^\circ\text{C}$ $\pm 0.15^\circ\text{C}$
Temperature setting	Rotary knob	Rotary knob	Push Button
Temperature scale graduation	2°C	2°C	No graduation
Maximum temperature variation between identical blocks	@ 40°C	0.2°C	0.2°C
Set point accuracy	$\pm 2^\circ\text{C}$	$\pm 2^\circ\text{C}$	$\pm 1^\circ\text{C}$
Maximum number of blocks	3	3	3
Heat up time, minutes	30-37°C 30-56°C 30-Max.	8 12 18	8 12 30
RS232 option available	No	No	Yes
Power supply	117V	117V	117V
Overall size L x W x H (mm)	279 x 260 x 105	279 x 260 x 105	279 x 260 x 105

Ordering Information

Product Code	Description
1081500	DB-3 ambient to 100°C, requires 3 insert blocks
1081800	DB-3A ambient to 200°C, requires 3 insert blocks
1081900	DB-3D ambient to 200°C, requires 3 insert blocks
FDB03DPR	DB-3D + RS232 ambient to 200°C, requires 3 insert blocks



DB-4D

DB-4D

- Can hold up to 4 aluminum insert blocks or two 96-well plate blocks
- Bright orange LED digital display for fast and accurate setting of temperature
- Temperature range from ambient to 100°C
- Powerful heater for fast heat-up rate: 30°C to 100°C in just 15 minutes
- Interchangeable insert blocks to accommodate a variety of tubes
- Temperature stability at 40°C: $\pm 0.1^\circ\text{C}$

Technical Specifications

		DB-4D
Temperature range		Ambient to 100°C
Temperature stability @ 40°C		$\pm 0.1^\circ\text{C}$
Temperature setting		Push button
Temperature display		Orange LED, 4 digits
Uniformity within block at 40°C		0.1°C
Uniformity within block at 100°C		0.1°C
Set point accuracy		$\pm 1^\circ\text{C}$
Maximum number of blocks		4
Heat up time, minutes	30-37°C	3
	30-56°C	11
	30-Max.	15
Heater power		600W
Power supply		117V
Overall size L x W x H (mm)		356 x 260 x 105

Ordering Information

Product Code	DB-4D
FDB04DP	DB-4D ambient to 100°C, requires 4 insert blocks
FDB04DPR	DB-4D + RS232 ambient to 100°C, requires 4 insert blocks

DB-2TC, Twin Control

A new Dri-Block® heater with an innovative design accommodating two blocks with independent digital temperature controls. Each block can be set at different temperatures - ideal for multiple users or for applications where samples have to be transferred between two temperatures very quickly.

The compact, robust design also allows the unit to be placed in fume cabinets where corrosive/toxic chemicals are used.

Operating over the temperature range of ambient to 100°C the unit has an impressive heat up rate and highly accurate thermal control with temperature stability of $\pm 0.1^\circ\text{C}$.

- Ideal for multiple users or applications
- Two blocks with independent temperature controls
- Can hold up to 2 aluminum insert blocks
- 4-digit setting with bright orange LED digital displays for fast & accurate setting of temperature
- Powerful heater for fast heat-up rate: 30°C to 100°C in just 19 minutes
- Temperature range from ambient to 100°C
- Temperature stability at 40°C: $\pm 0.1^\circ\text{C}$



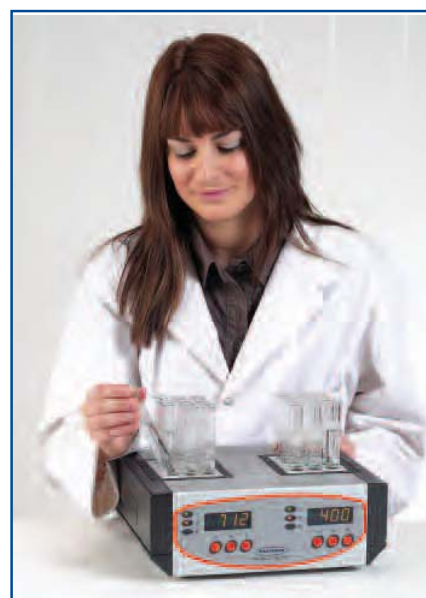
DB-2TC

Technical Specification

		DB-2TC
Temperature range		Ambient to 100°C
Temperature stability @ 37°C		$\pm 0.1^\circ\text{C}$
Temperature setting		Push button
Temperature display		Orange LED, 4 digits
Uniformity within block at 37°C		$\pm 0.1^\circ\text{C}$
Uniformity within block at 100°C		$\pm 0.1^\circ\text{C}$
Display resolution		0.1°C
Set point accuracy		$\pm 1^\circ\text{C}$
Maximum number of blocks		2
Heat up time, minutes	30-37°C	6 minutes
	30-56°C	14 minutes
	30-Max.	19 minutes
Heater power		2 x 150W
Power supply		117V
Overall size L x W x H (mm)		279 x 260 x 105

Ordering Information

Product Code	Description
FDB02DPTC	DB-2TC ambient to 100°C, requires 2 insert blocks





Aluminium Blocks

Interchangeable Blocks

For use with Techne block heaters. Manufactured from anodised aluminum and all with a separate hole to accommodate a thermometer if desired. All blocks have dimensions (d x w x h) 95 x 76 x 51 mm and can be used in any combination. *

*Excludes 96-well blocks

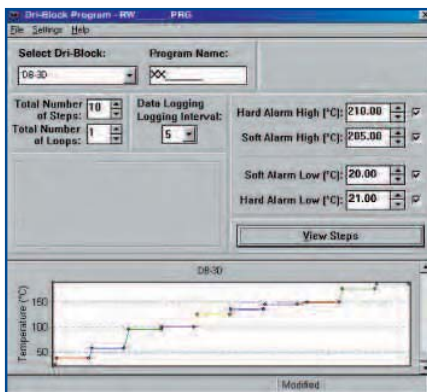
Aluminum Insert Blocks

Product Code	Tube Size (diam)	Number of Holes	Size d x w x h (mm)
F3501	Plain Block	None	95 x 76 x 51
F3502	6mm	30	95 x 76 x 51
F3503	10mm	20	95 x 76 x 51
F3504	12mm	20	95 x 76 x 51
F3505	13mm	20	95 x 76 x 51
F3506	15mm	12	95 x 76 x 51
F3507	16mm	12	95 x 76 x 51
F3508	19mm	8	95 x 76 x 51
F3509	25mm	6	95 x 76 x 51
F3510	10mm cuvettes	2 channels	95 x 76 x 51
F4460	Plain block	thermometer hole only	95 x 76 x 51
F4461	7 and 9 mm	20/10	95 x 76 x 51
F4462	24mm	6	95 x 76 x 51
F4463	26mm	6	95 x 76 x 51
F4464	1.5ml microcentrifuge tubes	20	95 x 76 x 51
F4465	0.5ml microtubes	30	95 x 76 x 51
F4466	Plastic spacer	None	95 x 37 x 51
F4467	Hi-Temp 96 block	96	95 x 151 x 61
F4468	Falcon round bottom plate block	96	95 x 151 x 61
F4469	Falcon flat bottom plate block	96	95 x 151 x 61
F4470	2.0ml microcentrifuge tubes	20	95 x 76 x 51
F4471	0.2ml microtubes	72	95 x 76 x 51
F4473	Block for 96 x 0.2ml microtubes	96	95 x 151 x 61
F4474	1.0ml Porvair Plate	96	95 x 151 x 48
F4476	Block for Gelation timer	1 sample cup	95 x 76 x 51

Software DB-2D/DB-3D/DB-4D

DBsoft has been designed for use with Dri-Block® models DB-2D, DB-3D and DB-4D. DBsoft is a Windows® based program that connects via an RS232 connection to your computer.

Programs can be created, saved and loaded at any time as well as running in real time mode. Definable parameters include time, temperature and ramp rates. Temperatures within the range of ambient to 200°C can be programmed.



DBsoft

DBsoft enables you to:

- Create, open, save and print programs
- Open, save, print and view logged data as a line graph
- Open, print and view logged data in a text format
- Create calibration certificates
- Run a program in real time mode
- Send programs to the Dri-Block®
- Retrieve programs from the Dri-Block®
- Retrieve test results from the Dri-Block®
- Erase test results
- Password protect
- Obtain full on-line help



3 Terri Lane, Suite 10
 Burlington, NJ 08016
 T: 800.225.9243
 F: 609.589.2571
 www.techneusa.com