



THERMALVIEW

RUNNING
THERMALVIEW

Part Number 145602

ALL RIGHTS RESERVED © 2002, 2003

Some Important Notes Before Getting Started...

This application requires a reasonably dedicated system during operation. In order to avoid errors occurring due to system conflicts it is recommended that before starting this application, you first disable your screensaver or any programs that are set to begin at a scheduled time, which may consume extra resources. Also, it is necessary to disable any software which automatically makes use of your computer's serial port such as Palm-Pilot, MIDI or GPS communication software. Such software tends to monopolize use of this port which prevents other applications from communicating through it.

It is also important to note that it is always a good idea to halt previous operations before beginning new operations. For instance, it is NOT recommended for you to record a file while playing back a file simultaneously. You should also try to avoid changing the recording settings *during* recording of a file (i.e. if you're recording in Celsius and want to record in Fahrenheit then you should stop the recording, change the setting, and begin recording again.).

TECHNICAL SUPPORT

For technical support please contact:

Techne Inc
3 Terri Lane Suite 10
Burlington, NJ 08016

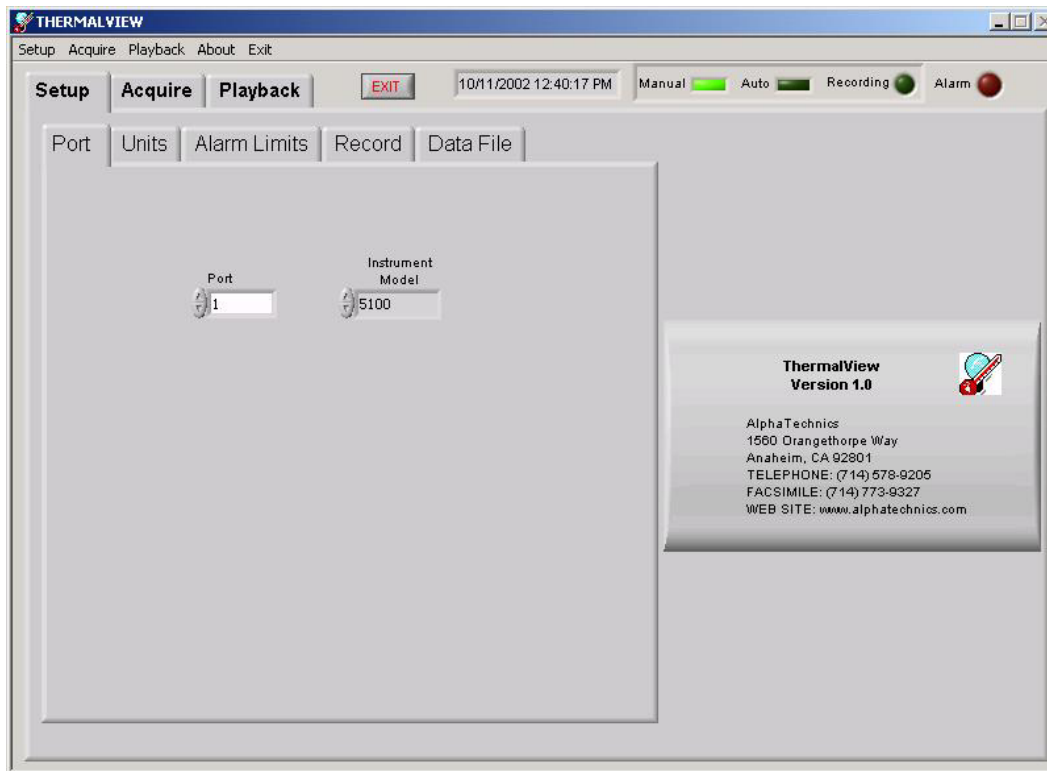
Tel: (609) 589-2560
Web: www.technusa.com

RUNNING ThermalView:

You can run ThermalView by going to *Start – Programs – AlphaTechnics – ThermalView* or double-click on the shortcut on your desktop (if you created one after installation).

SETUP TAB

The first time ThermalView is run after the first installation it will start in the **Setup** tab, as shown below:



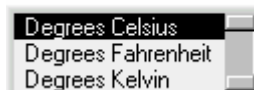
Port Tab:

ThermalView will default to **Port 1 – Instrument Model 5020** (shown above). The port number should be set to the number of the serial port the AlphaTechnics temperature instrument is connected to. For example, if the serial cable from the instrument is connected to serial port COM2, set the Port number control to 2. Set the instrument model to the AlphaTechnics temperature instrument model number you are using.

Units Tab:

You can choose to record temperature in Celsius, Fahrenheit, or Kelvin, by clicking on the Units tab (default is Degrees Celsius).

Temperature Units




ThermalView will automatically change the unit labels on the Alarm Limits, Threshold Limits, and Waveform Chart. Changing to a different temperature units setting will also clear the Waveform Chart.

Alarm Limits Tab:

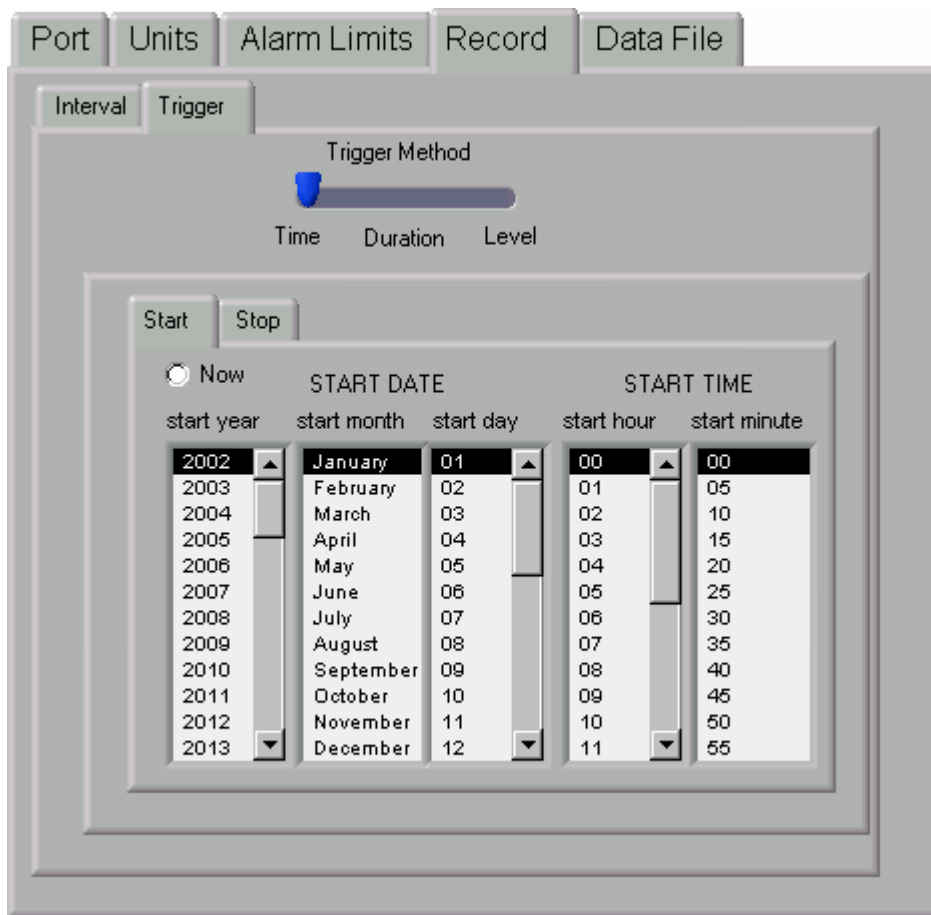
ThermalView allows you to set an Upper and a Lower Limit temperature range in this tab.

Upper Limit
100.00 Degrees Celsius

Lower Limit
-40.00 Degrees Celsius

Using these values, ThermalView can notify you if the reading falls above or below the range you specified by flashing the Alarm indicator , which is located at the top right of the main window.

Record Tab:



START DATE			START TIME	
start year	start month	start day	start hour	start minute
2002	January	01	00	00
2003	February	02	01	05
2004	March	03	02	10
2005	April	04	03	15
2006	May	05	04	20
2007	June	06	05	25
2008	July	07	06	30
2009	August	08	07	35
2010	September	09	08	40
2011	October	10	09	45
2012	November	11	10	50
2013	December	12	11	55

You can set ThermalView to automatically start and stop recording readings by using this tab. To start and stop recording manually, do not change the settings on this tab and see **Acquire Tab** for more information. The **Interval Tab** tells ThermalView how often to record readings in Manual and Automatic mode; the default is 1 second.

Trigger Methods Tab:

There are three Trigger Methods that you can use to automatically acquire readings – *Time, Duration, and Level*.

- **Time Method** (shown above) - You can set ThermalView to start acquiring readings on a date and time specified by you on this tab. You must also specify a Stop date and time in order for ThermalView to work properly using this method. ThermalView will switch to Automatic and start recording whenever a Start date and time is earlier than the present date and time and a Stop date and time is later than the present date and time. If the Start date and time is later than the present date and time, ThermalView will switch to Automatic but will not begin recording until the system time reaches the Start date and time.
- **Duration Method** – Using this method, you can tell ThermalView to acquire readings automatically for a specified period of time. You must specify a Start date and time in order for this to work properly. Once you change the value of any of the columns (years, months, days, etc...) on the duration tab, ThermalView will switch to Automatic mode and start recording acquired readings (if the difference between the Start date and time and the Duration extends to equal or later than the present system time). If the Start date and time is later than the present date and time, ThermalView will switch to Automatic mode but will not start recording until the system time reaches the Start date and time.
- **Level Method** – ThermalView will only record readings if it falls above the Upper Threshold or below the Lower Threshold that has been entered in this tab. Setting the Trigger Method to **Level** will change ThermalView from Manual mode to Automatic mode and record acquired readings that are above or below the limits you specified.

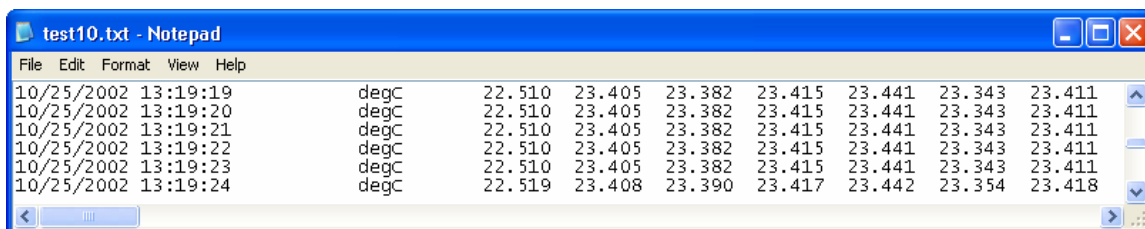
**** Please note that the Threshold settings on this tab is not the same as the limits that are entered in the **Alarm Limits Tab**. Threshold settings control when data recording takes place; Alarm Limit settings control when the Alarm indicator flashes. (Threshold limits will also update automatically if a different Unit is selected from the **Units Tab**.) ****

ThermalView will always switch to Automatic mode whenever the Trigger control is set to Level. This is because there is always a possibility that a temperature may go beyond the Threshold Limits.

Data File Tab:



This tab tells ThermalView what file to use when saving recorded readings. A full path name may be typed in or you may browse by clicking on the folder icon. The file specified is in *.txt* format and can be opened using Notepad or exported into Microsoft Excel using the Tab Delimited option. Below is an example of what the reading will look like using notepad:



NOTE: To export your data into Microsoft Excel, start Excel and open the file you would like to export (choose **All Files** from *Files of Types* at the bottom of the Open window). This will start the Text Import Wizard – Step 1 of 3, where you will choose *Delimited* and click *Next*. On Step 2, accept the defaults (should be **Tab Delimited**) and click *Next*. On Step 3, accept the defaults and click *Finish*.

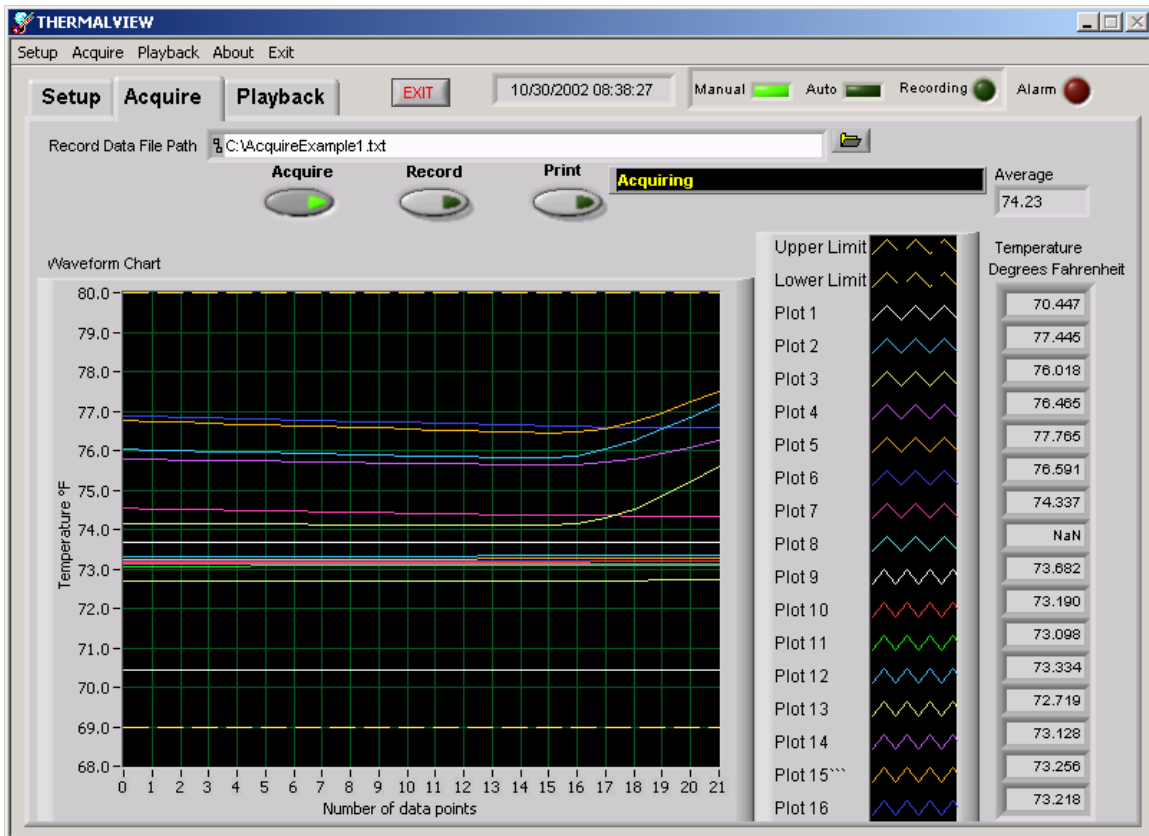
A simpler alternative is to open Excel and open Windows Explorer. With the Excel and Explorer windows side-by-side on the desktop, drag the data file icon from the Explorer window into the Excel window. The data file should open in Excel without requiring any further action.

ACQUIRE TAB

The **Acquire Tab** shows the readings that ThermalView has acquired in a Waveform Chart format (shown below). To start acquiring readings, click on the **Acquire** button. To start recording the readings, click on the **Record** button (if the field **Record Data File Path** is not filled in ThermalView will automatically ask you where it can save the data file). Click on the **Print** button to print your readings to your default printer.

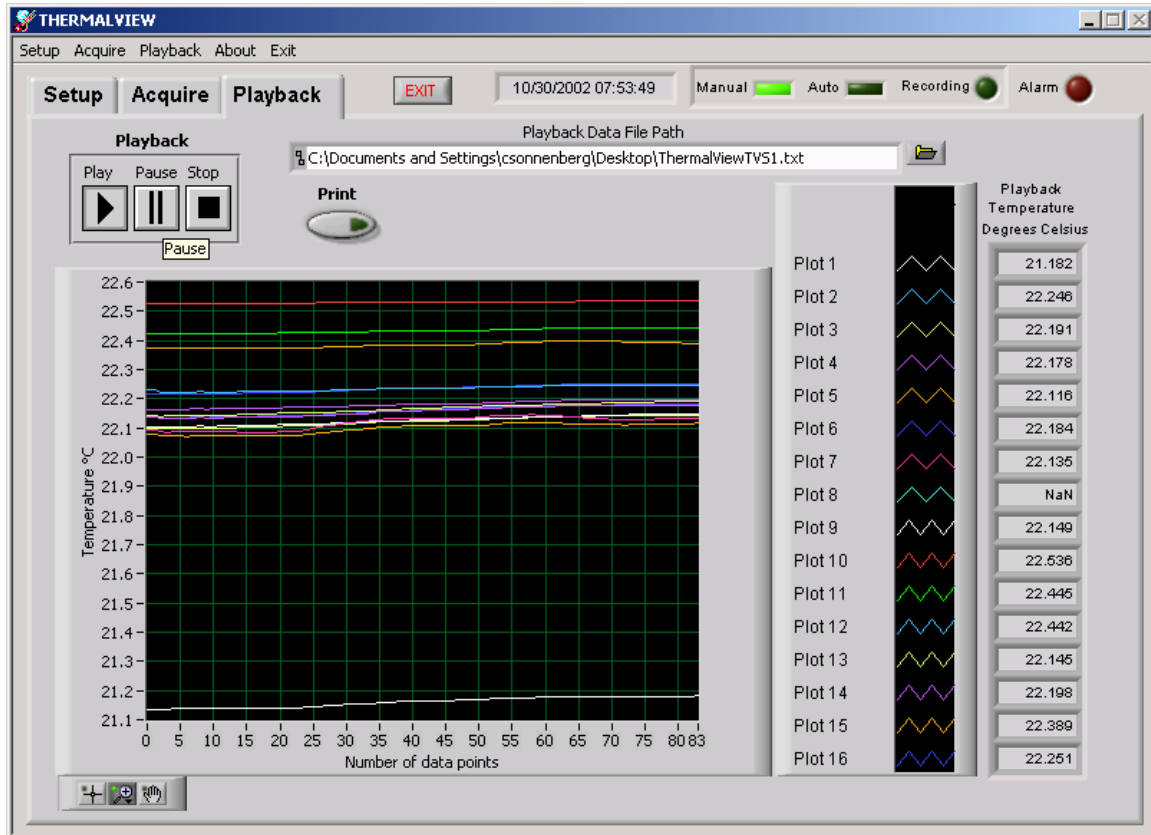
The Waveform Chart will automatically scale the readings. To change the range the chart displays, right click on the chart and deselect *Autoscale Y*. The Temperature on the left side of the chart can be modified by clicking on either the lowest or highest of the numbers and changing it. The chart will automatically update with the new temperature setting that you entered. At the bottom of the chart is the Number of data points. You can also modify the attributes of the lines of each Plot on the right side of the chart by right clicking and accessing the pop-up menu.

The data points are displayed at the rate of acquisition, which is independent of the recording rate. The Waveform Chart will start scrolling after 1024 points are displayed.



PLAYBACK TAB

The **Playback Tab** displays readings from previously recorded files in a Waveform Chart format (shown below). The controls are designed in the format of a standard tape player with play, pause, and stop modes.



ThermalView Operator's Manual

Part Number 145602